

ADDENDUM NO. 2

DATE: January 19, 2010

PROJECT: THE TIE CENTER, AN INDIANA SCIENCE PARK
SCOTTSBURG, INDIANA 47170

PROJECT NUMBER: 07072.000

OWNER:

THE SCOTT COUNTY PARTNERSHIP
City of Scottsburg
2 East McClain Avenue
Scottsburg, Indiana 47170

ARCHITECT:

RATIO ARCHITECTS, INC.
107 South Pennsylvania Street
Schrader Building, Suite 100
Indianapolis, Indiana 46204-3684
Phone: (317) 633-4040
Fax: (317) 633-4153



William A. Browne, Jr.

STRUCTURAL ENGINEER:

CE SOLUTIONS, INC.
10 Shoshone Drive
Carmel, Indiana 46032
Phone: (317) 818-1912
Fax: (317) 818-1911

MECHANICAL/ELECTRICAL ENGINEER:

LOFTUS ENGINEERING, INC.
233 McCrea Street, Suite 700
Indianapolis, Indiana 46225
Phone: (317) 352-5822
Fax: (317) 352-5821

CIVIL ENGINEER:

SAEGESSER ENGINEERING, INC.
88 West McClain Avenue
Scottsburg, Indiana 47170
Phone: (812) 752-8123
Fax: (812) 752-7271

This Addendum is issued in accordance with the provisions of Contract Documents, and becomes a part of the Contract Documents as provided therein. The information contained herein modifies the original Bidding Documents dated January 5, 2010 and all prior Addenda as applicable. Requirements of the original Bidding Documents and previous Addenda remain in effect except as modified by this Addendum. Acknowledge receipt of this Addendum in the space provided on the Bid Form. Failure to do so may subject the Bidder to disqualification.

PART 1 – GENERAL CLARIFICATIONS

1. **Bidders are to Note that the Bid Date and Bid Documentation are herein revised in this Addendum.**

PART 2 - PROJECT MANUAL CHANGES

1. 00010 NOTICE TO BIDDERS
 - a. Revise the end third Paragraph on the Notice to Bidders for Sealed bids to be delivered “until 2:00 pm local time, Wednesday, February 3, 2010.”
 - b. Revise the date indicated for special provisions request at City Hall (in Paragraph five) for the revised Bid Day noted above, to “January 22, 2010.”
2. 00101 SUPPLEMENTARY INSTRUCTIONS TO BIDDERS
 - a. Delete sub-paragraph C.4.3.1.1.3 and Paragraph C.4.3.1.3 in their entirety, and adjust the remaining numbers sequentially accordingly.(Bidder is not required to submit the Subcontractor and Material List on Bid Day, or after Bid Day)
 - b. Add the following new Paragraph 4.3.5:

“4.3.5 The two (2) lowest, most responsive and responsible, bidders are required to provide and submit within 48-hours after submitting their proposals for the work, a complete Materials List (included in the ARRA Provision Section), which is to include all of the names of the manufacturers of steel, products, and equipment to be used on the Project. The Bidders are to utilize the Subcontractor and Material List included in the Documents as a guideline for said list. Bidders are allowed to provide their own document in lieu of the ARRA form, provided it contains the same format and includes the U. S. Manufacturers name, address, phone number, and place where the material is coming from within the United States. The List is to be faxed or emailed to RATIO Architects, (317)633-4153/jbriggs@ratioarchitects.com, and to Saegesser Engineering, (812)752-7271/Bill@SaegesserEngineering.com”
 - c. Modify Paragraph 5.3.1.1, first sentence, in lieu of “by the end of day January 29, 2010”, substitute the following, “by the end of day February 5, 2010.”
3. 07412 METAL WALL PANELS
 - a. Delete Sub-paragraph 1.2.2 and Paragraphs 27 and 3.5 in their entirety.
4. 08311 ACCESS DOORS AND FRAMES
 - a. Add new sub-paragraph 2.2.A.9. under acceptable manufacturer, “Elmdor”.
5. 08712 DOOR HARDWARE
 - a. Add new Sub-paragraph 2.7.A.2.d under acceptable Key Control Systems, “Bommer Industries”.
6. 10100 VISUAL DISPLAY BOARDS
 - a. Delete Sub-paragraphs 1.2.A.3. and 1.2.A.4. in their entirety.
 - b. Add new sub-paragraph 2.1.A.g.. under acceptable manufacturers of Porcelain Enamel Marker-boards, “Newline Products, Inc.”

- c. Delete Paragraph 2.2.C. in its entirety.
 - d. Delete the reference “and Conference Units” from the title of Paragraph 2.3.B.
7. 10155 TOILET COMPARTMENTS
- a. Add Sub-paragraphs 2.1.A.9 to acceptable manufacturers, “General Partitions”.

PART 3 - DRAWING CHANGES

- 1. C-104 SITE PROPOSED UTILITIES
 - a. Revise the 18” PVC .
- 2. S-101 AREA 'A' FOUNDATION / SLAB-ON-GRADE PLAN
 - a. Near the column at 1.9-C.8 (northeast corner of Break Room #108), revise 11” dimension to outside face of foundation wall to be 9”. Thus, 6’-8” dimension at Passage/109C to the west becomes 6’-10”
- 3. S-201 AREA 'A' ROOF FRAMING PLAN
 - a. Provide frame for roof hatch opening per 3/S501 at Trash Room #241 (see Arch. for size/location).
- 4. A-131 FIRST FLOOR REFLECTED CEILING PLAN AREA-A
 - a. Revise the ceiling heights indicated for SCIF Rooms #1 and #2 to 8’-0”.
- 5. A-203 EXTERIOR ELEVATIONS
 - a. Revise the height of the 6’-0” x 12’-0” Louver indicated on Elevation F6/A-203 to 14’-8” to top of louver.
- 6. A-323 WALL SECTIONS
 - a. Add new Details D6/A-323 and E3/A-323 for roof hatch unit and ladder, as indicated on Sheet AD02-101A included with this addendum.
- 7. A-503 EXTERIOR DETAILS
 - a. Add new Details 8/A-503 and 9/A-503 for canopy details, as indicated on Sheet AD02-102A, included with this addendum.
 - b. Add new Detail 10/A-503 for extended parapet detail, as indicated on Sheet AD02-103A, included with this addendum.

PART 4 – PREVIOUS ADDENDA

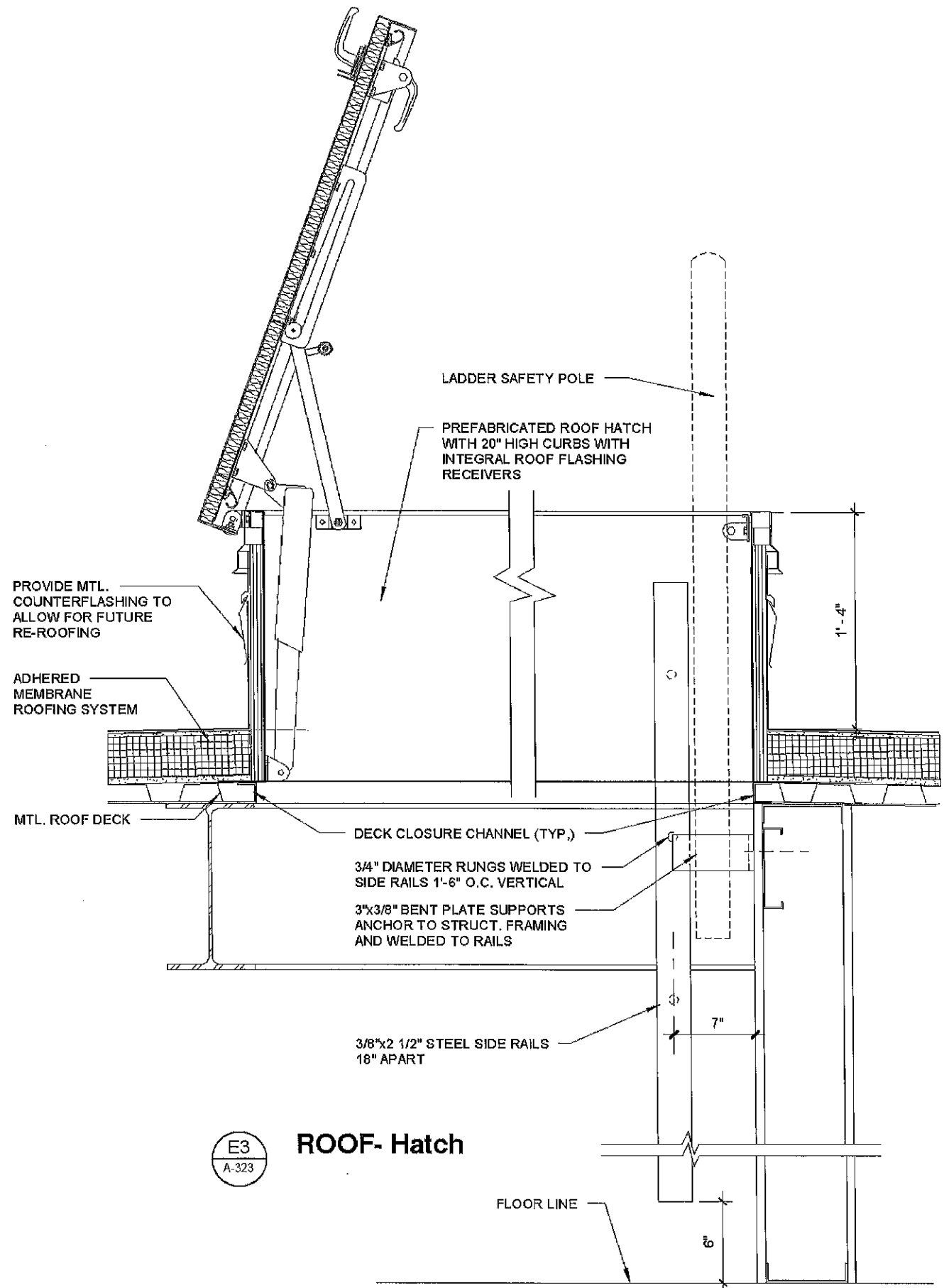
- 1. Nothing to be issued.

PART 5 – ATTACHMENTS

- A. Drawings, 11 x 17 Sheets: AD02-101A, 102A and 103A.
- B. Pre-Bid Meeting Minutes – dated January 15, 2010.

END OF ADDENDUM NO. 2

10"

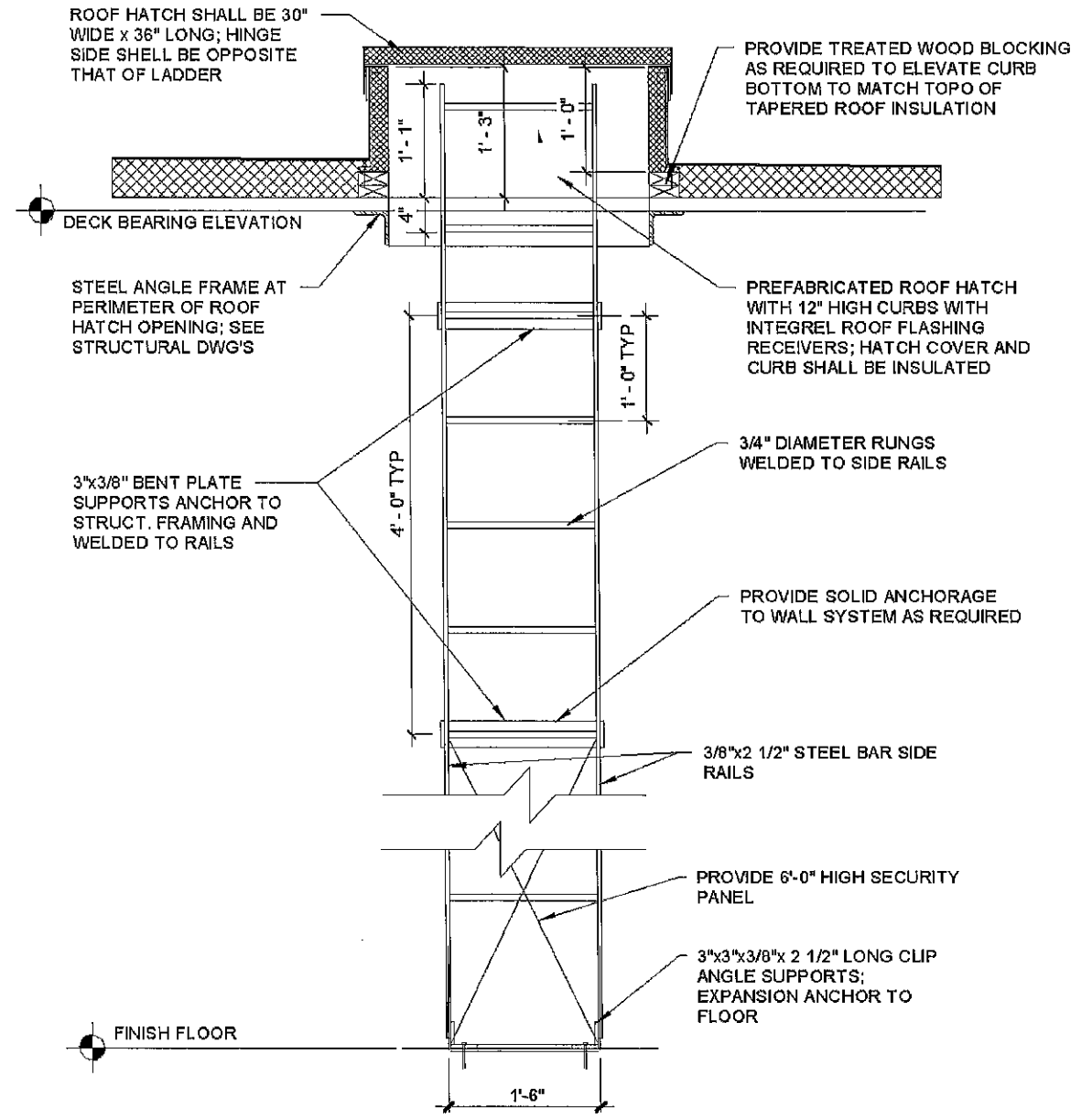


E3
A-323

ROOF- Hatch

FLOOR LINE

6"



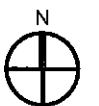
D6
A-323

ROOF LADDER ELEVATION

FINISH FLOOR

1'-6"

PROJECT:
 Scottsburg TIE
 Center
 An Indiana
 Science Park
 EDA #06-79-73010



RATIO
 Indianapolis Studio

RATIO Architects, Inc.
 Suite 100, Schrader Building
 107 South Pennsylvania Street
 Indianapolis, Indiana 46204
 t. 317.833.4040
 f. 317.833.4153

DO NOT SCALE DRAWING

PROJECT NO.
 07072.001

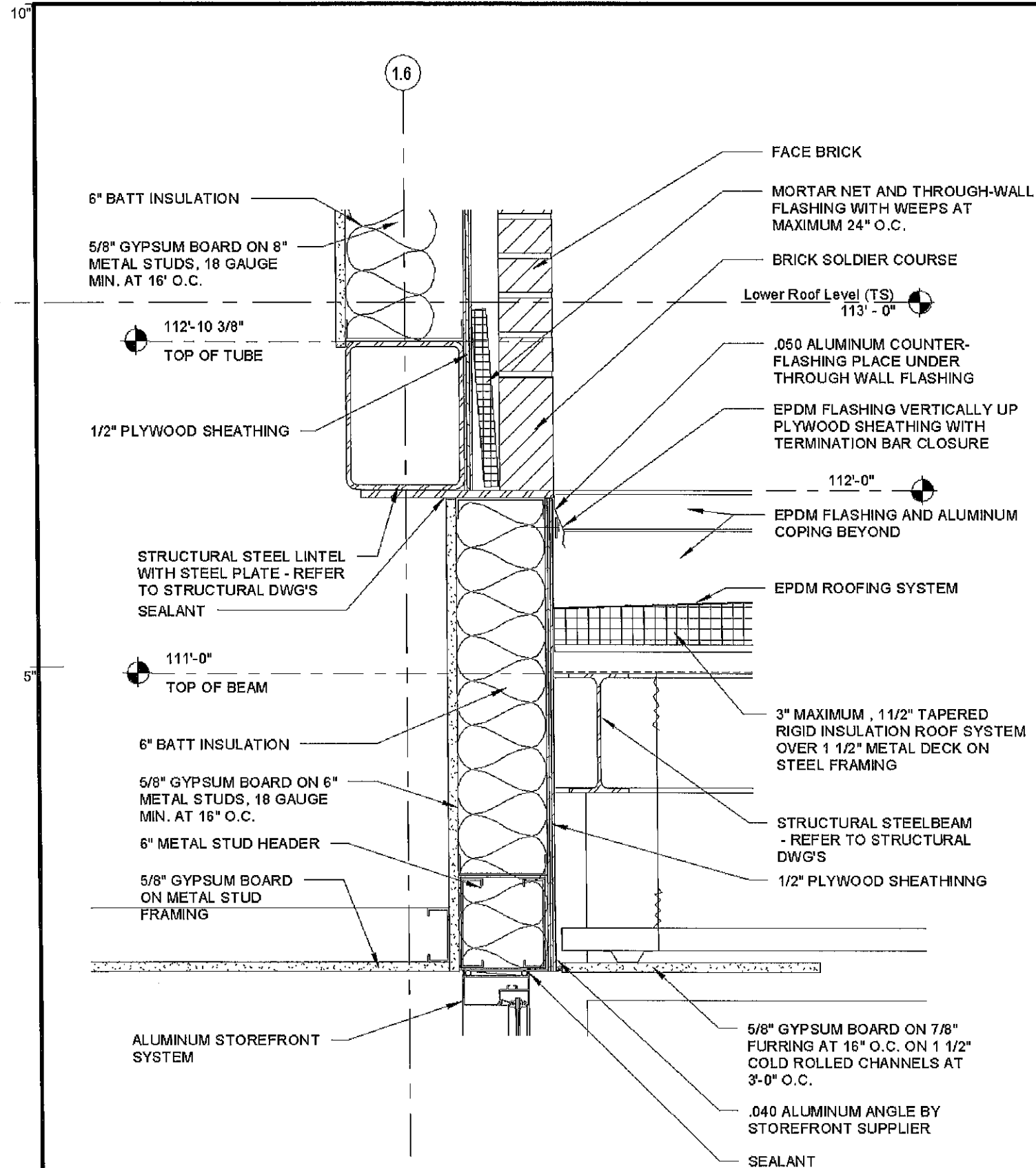
DATE
 01/19/10

SHEET NO.
 AD02-101A

0"

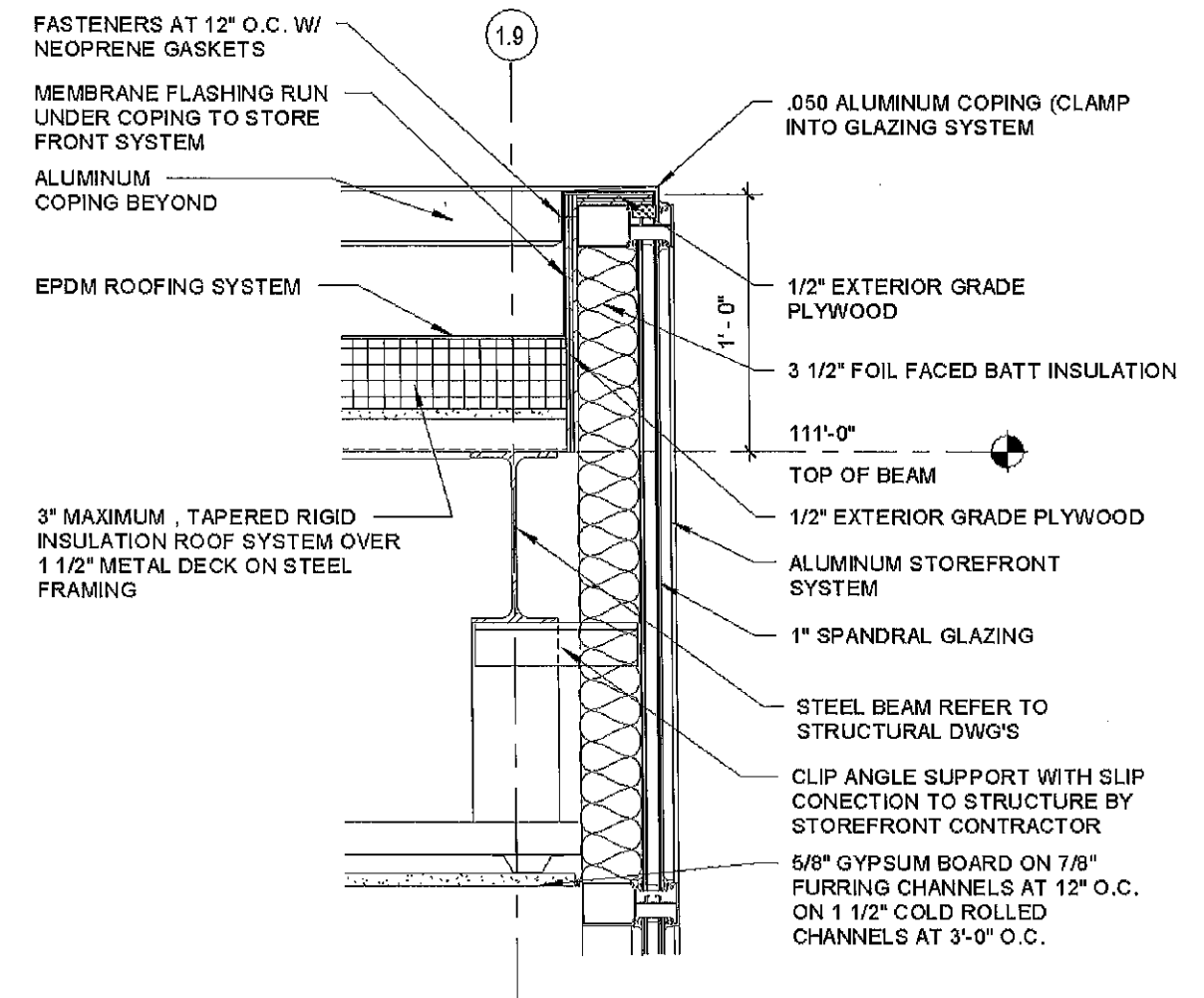
7"

14.5"



9
A-503

FLASHING SECTION DETAIL



8
A-503

STOREFRONT COPING DETAIL



RATIO

Indianapolis Studio

RATIO Architects, Inc.
Suite 100, Schrader Building
107 South Pennsylvania Street
Indianapolis, Indiana 46204
t. 317.633.4040
f. 317.633.4153

DO NOT SCALE DRAWING

PROJECT NO.

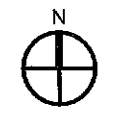
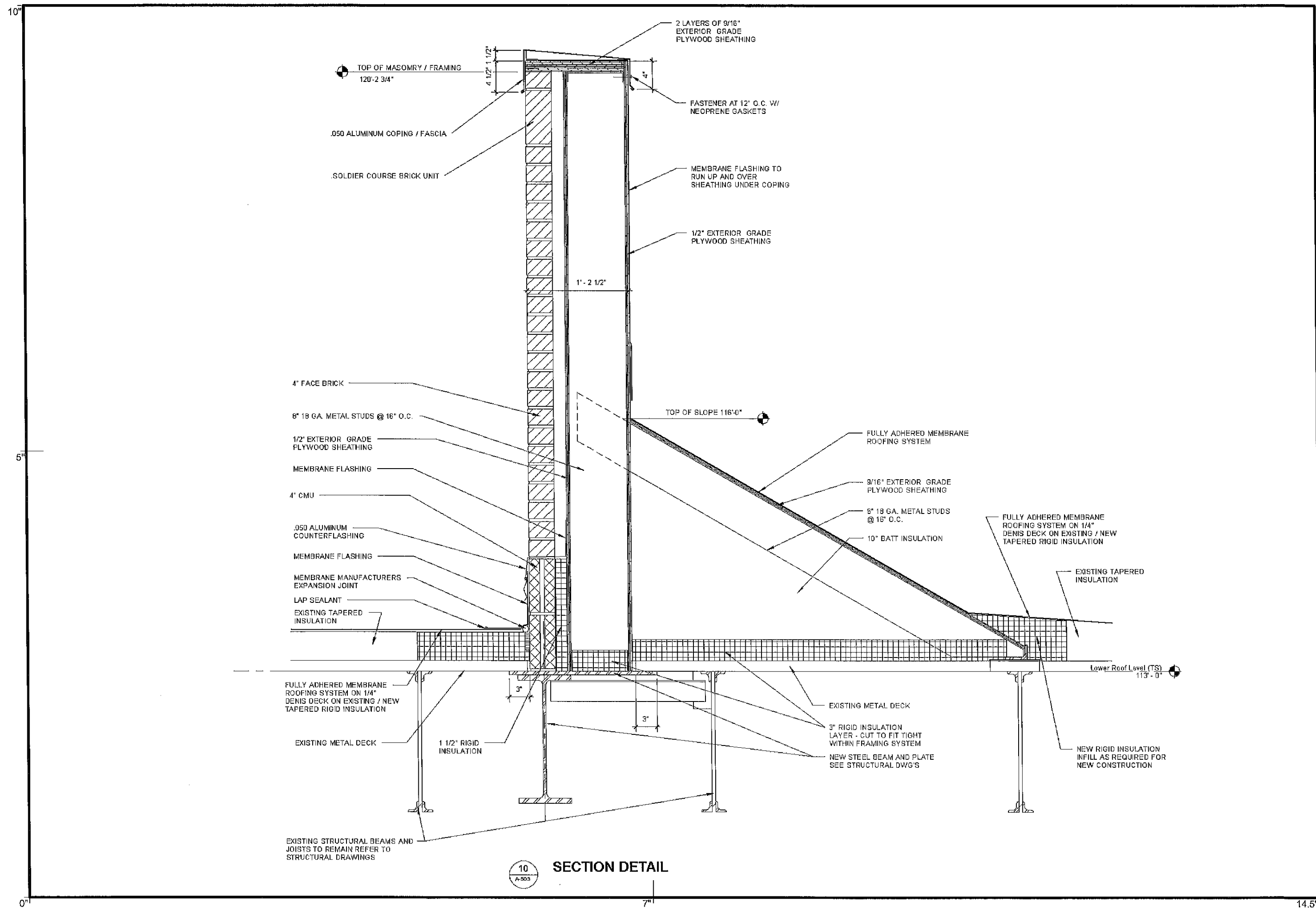
07072.001

DATE

01/19/10

SHEET NO.

AD02-102A



RATIO
 Indianapolis Studio
 RATIO Architects, Inc.
 Suite 100, Schrader Building
 107 South Pennsylvania Street
 Indianapolis, Indiana 46204
 t. 317.633.4040
 f. 317.633.4153

DO NOT SCALE DRAWING

PROJECT NO.
 07072.001

DATE
 01/19/10

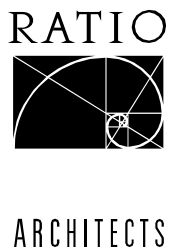
SHEET NO.
 AD02-103A

10 SECTION DETAIL
 A-503

10"
 5"
 0"

14.5"

Ratio Architects, Inc.
Suite 100, Schrader Building
107 South Pennsylvania Street
Indianapolis, Indiana 46204-3684
317 633 4040
317 633 4153 Fax
www.RatioArchitects.com



PRE-BID MEETING MINUTES

Project: The TIE Center, an Indiana Science Park
Scottsburg, Indiana
Ratio Project No. 07072.000

Date/Time: January 15, 2010 @ 10:00 a.m.

Purpose: Pre-Bid Meeting

Held at: TIE Center

Participants: Owner's Team
Design Team
Bidders - SEE SIGN-IN SHEET ATTACHED

A. Introduction

1. Sign-up sheet for names, companies, addresses, telephone and fax numbers, and E-mail addresses. **Print Legibly.**
2. Note Design Team personnel responsible for specific responses to questions:
 - a. Ratio Architects/Loftus Engineering/Saegesser Engineering/C.E. Solutions.
 - b. Owner: Mayor Graham and Bob Poggel.
 - c. River Hills: Melissa Woods, the Grant Administrator.
3. Emphasize all questions to be in writing, no verbal answers will be given, and even if given, not viable unless in one of the addendums.
 - a. Send all Pre-Bid Questions to Ratio Architects, Inc. Fax #317-633-4153 or Email – jbriggs@ratioarchitects.com
4. Project Total Budget – EDA/ARRA Statement on Covers. Project total cost includes the purchase of the existing building, land, and interior materials such as FF & E, and design fees, administration fees and a couple of other soft cost items. The current cost opinion is around \$6,000,000.00.

B. City of Scottsburg

1. Mayor Graham expressed his appreciation for all who have shown up today and explained the importance of the new facility for the City and that it has been a dream of his since he became Mayor.

C. Federal Requirements

1. Project Grant Administrator – Melissa Woods role in the process and general requirements of the Grant – specifically the reporting aspects that the successful bidder will be required to provide. Both she and the rest of the Owner's team will assist the contractors in complying with these federal requirements – the contractors will not be alone in this effort.
2. EDA and ARRA Requirements – Melissa pointed out the Davis Bacon Wage Rates requirements and how a revised updated list will be issued in the last addendum. In regard to the rates and laborer types, if a labor type is not indicated, the Contractors are requested to contact Melissa and she will get a labor type and wage rate from the Federal EDA. Reporting Requirements for Jobs and partial jobs saved is required and will be expounded upon later with the successful bidder. Buy American requirements are very important on the Project and are referenced in every specification submittal – this is part of the Material and Supplier list requested after the bid date and why the Government requests contact information of the manufacturers, especially the steel suppliers. MBE & WBE Goals are just that, goals, however the successful contractors will be expected to provide appropriate documentation as to good-faith efforts to attain these goals. Lastly, there are several Federal Forms for Submission with Bids and with Contract already included in the Manual.

3. Project Sign – In EDA Provision – note the requirements for the project sign.

D. Project Overview & Requirements

1. Bidding Process – **Eastern Engineering producing documents - Refundable & Non Refundable Checks per the documents. Go through RATIO for the drawing sets – fax in copies of the checks and we will issue authorization to Eastern. We were issuing 2-Bid forms due to separation of work that is non-EDA qualified work. The scope for the second Bid Form is defined in Addendum #1. Documents to turn in on Bid Day are redefined in Addendum #1. Bid and Performance Bonds are required. Material and manufacturers Document for the two low bidders is required within 48 hours of the Bid, which is Saturday and will be received by both Saegesser and Ratio. There is no liquidated damages on the project as indicated/referenced in the EDA Provision.**
2. Note Bid date, time and location for bid receipt indicated below. Public bid opening at City of Scottsburg City Hall as indicated in the Manual.
3. Bids are to be held for Sixty (60) Days, but it is the intent to move rapidly forward and issue award by February 9th and mobilize one the Contract is signed by late February.
4. Emphasized completing all blanks on the Bid Forms.
5. Noted that there are no Voluntary Alternates allowed, Bid Alternates indicated are all Deduct types and are in the sequence of acceptance. None of the Alternates are impacted the Grant Scope of work.
6. Addendum #1 brought to meeting today and is to be distributed after the pre-bid meeting.
7. Project is already submitted to the State for Design Release.
8. Project Site and Neighbors – **Project Staging is pretty much the entire site north of the wall separating the south bay portion of the structure from the main structure as indicated on the drawings. The parking lots and drive access (one of the first elements to be built in the project) will be the contractors. Maintaining the security and weather-tightness is the Contractors responsibility. Building Security is required to the greatest degree as possible considering several exterior walls will be removed during the construction process – full blown temporary secure walls will not be required. Site Security is to be maintained by the Contractor. Temporary Facilities are defined in the Manual – note the use of the Owners water and electricity. Work Hours are to be at the Contractors option. There is a neighbor to the far south end of the building that will access their portion of the building from the south drive and the west side parking lot – Construction traffic is not allowed to use these areas.**
9. Project Scope:
 - a. General & Architecture – design and intent of versatility and function for the innovative individuals coming to this facility. This facility is unique in the State and elsewhere since it is tied to a City in lieu of a University.
 - b. Landscape & Civil – briefly reviewed scope and courtyards.
 - c. Structural – generally includes some steel and joist systems.
 - d. Mechanical/Plumbing/Fire Protection – General review of systems, reuse and new.
 - e. Electrical – General review of systems, reuse and new.
10. Sales Tax Exemption is noted for this project.
11. Site Safety and house-keeping. Contractors will be fully responsible for maintaining a clean and safe site – there is a line item required on the Schedule of Values related directly to this effort and can only be drawn upon if clean-up is progressing properly.
12. Testing and Reports – By Contractor – provide per the Contract Documents. Any special or re-testing will comply with the Contract Documents.

E. Addendum Schedule

1. Addendum #1 - Today
2. Addendum #2 – Tuesday, January 19 – Noon.
3. Addendum #3 – Friday, January 22, - Noon. **(NOTE revision in Addendum #2)**

F. Questions and Answers / Building Walk-Thru.

1. Question: Subcontractor and Material List submission – in lieu of providing on Bid Day, can the supplemental Manufactures List with complete information on all the material and subcontractors being supplied two days after bid be acceptable?
Response: We will review request and confirm in the next addendum.
2. Question: Slab thickness throughout the facility?
Response: The majority of the slabs, if not all within the areas being saw-cut are between 4” and 5” thick. There are a small number of locations where the slab thicknesses are 16” to 24” thick, but these are in areas where work is not

required.

3. Question: Deck weld point/deck attachment verification requirement in Structural Drawings – if the welds/attachment are found to be non-satisfactory, will the corrective action be a change in scope to the work and handled as a Change Order?

Response: Yes.

4. Question: The reused existing Mechanical AHU on the roof – can the scope of cleaning and rework be better defined for the reuse of the units –what extent of modification and cleaning is required?

Response: Will be clarified by addendum.